

CURBSIDE VOTING

If you are unable to enter the polling place because of age or physical disability, you are allowed to vote in your vehicle. Look for the curbside voting sign. If someone is driving you and they are able to enter the precinct, they must vote inside the precinct.

TRANSFER VOTING

If you move from one precinct to another and it has been more than 30 days and you fail to change your address, there is a procedure that allows you to vote on Election Day. Go to your old precinct and fill out a voter update/transfer form. Then you can take the form to your new precinct and vote a regular ballot. The other option is to vote a provisional ballot at the old precinct. To avoid this, change your address by the registration deadline. This can be done by either filling out a new registration card or you can mail or fax a written notice, signed by the voter, that includes the voter's full name, old address, new address and the voter's confirmation that they moved at least 30 days before the next primary or General Election from the old to the new address.

VOTER ASSISTANCE

Any near relative* of the voter may offer assistance to the voter regardless of the voter's physical or mental ability. A voter may request assistance from someone other than a near relative if the voter meets one or more of the following conditions: (1) they are unable to enter the voting place or booth without assistance, (2) they are unable to mark their ballot without assistance, (3) the voter, due to illiteracy, is unable to mark their ballot, (4) the voter, due to blindness is unable to mark their ballot. The voter must ask for assistance and indicate who they wish to assist them. The request may also be made in writing. There are some restrictions on who can assist a voter. The voter's employer, an agent of the employer, an officer or agent of the voter's union, may **not** assist a voter unless qualified by reason of kinship. This is governed by G.S. 163-166.8

*spouse, parent, sibling, child, grandparent, grandchild, in-law, stepchild, stepparent

PRECINCTS

Precinct 01-16

Scotland County Annex
231 East Cronly
Laurinburg, NC

Precinct 02-25

The Learning Center
420 Stewartsville Road
Laurinburg, NC

Precinct 03-03

Scotland Place
1210 Turnpike Road
Laurinburg, NC

Precinct 04-04

National Guard Armory
1520 South Main Street
Laurinburg, NC

Precinct 05-10

Gibson Fire Station
6280 Gibson Road
Gibson, NC

Precinct 06-89

Laurel Hill Community Building
14940 Church Street
Laurel Hill, NC

Precinct 07-07

Wagram Recreation Center
24441 Marlboro Street
Wagram, NC

PRECINCT GUIDE

SCOTLAND COUNTY



Scotland County Board of Elections

231 East Cronly Street
Laurinburg, NC 28352
910-277-2595

Email: elections@scotlandcounty.org

PRECINCT

What is a precinct? A precinct is a subdivision of a county, city, or town for election purposes. Precincts will vary in size and number of residents in them. Each precinct has a specific polling place where the registered voters cast their ballot. In Scotland County there are **7** precincts. On Election Day the polling place will open at 6:30 AM and close at 7:30 PM.

PRECINCT OFFICIALS

On Election Day, each precinct is staffed with precinct officials. Each precinct has a Chief Judge, who is in charge, two Judges, and a number of Assistants depending on the numbers of registered voters in that precinct. They are trained in all aspects of the voting process and will assist you in all facets of you exercising your right to vote. They are there to help you.

BUFFER ZONE

Buffer Zone and Adjacent Area for Election- Related Activity. – No person or group of persons shall hinder access, harass others, distribute campaign literature, place political advertising, solicit votes, or otherwise engage in election-related activity in the voting place or in a buffer zone which shall be prescribed by the county board of elections around the voting place. In determining the dimensions of that buffer zone for each voting place, the county board of elections shall, where practical, set the limit at 50 feet from the door of the entrance to the voting place, measured when that door is closed, but in no event shall it set the limit at more than 50 feet or at less than 25 feet. Except as provided in subsection (b), the county board of elections shall also provide an area adjacent to the buffer zone for each voting place in which persons or groups of persons may distribute campaign literature, place political advertising, solicit votes, or otherwise engage in election-related activity. G S 163-166.4

ELECTIONEERING

Electioneering is any group or person seeking to influence a voter's choice in an election. This is carried out by distributing campaign literature by hand or voice, displaying signs, and/or wearing t-shirts, hats, buttons that display loyalty to a party or candidate while loitering or congregating. This can be executed at various places and at the polling place but it can not be done within the Buffer Zone or in the polling place. If you see any of this within the Buffer Zone or within the polling place, report it to a precinct official. Voters are permitted to wear a t-shirt, hat, button, or carry literature referring to a party or candidate while in the polling place as long as they do not try to influence other voters.

VOTING

Upon entering the voting place, you will give your name, address and party (primary only) to the election officials. If you are properly registered at the voting place, you will be given an ATV Form to sign, then you will be allow to vote a regular ballot.

Ballot Marking Instructions:

- A. To vote for a candidate whose name is on the ballot, completely fill in the oval next to their name. **Do not use a check mark or an X.** *Color in the oval completely to ensure that your vote is counted.*
- B. Use the pens that are provided at the polling place.

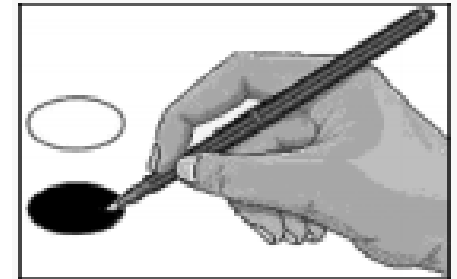
Voting Instructions:

- A. Beside the candidate you would like to vote for, you would simply color in the bubble completely.
- B. Some races will allow you to vote for more than one person, make sure to read your ballot carefully.
- C. Review your ballot to verify you have voted all desired races and your ballot is complete.

Voting Instructions— Continued

- D. Once you have checked your ballot, you will proceed to the tabulator where you will insert your completed ballot.
- E. Exit the voting enclosure. Once you have inserted your ballot into the tabulator, you have completed the voting procedures and you must then exit the voting enclosure.

Note: Color in the oval—do not use a check mark or an X. Color in the oval with the pens provided at the polling place.



“Let us never forget that government is ourselves and not an alien power over us. The ultimate rulers of our democracy are not a President and senators and congressmen and government officials, but the voters of this country.”

- Franklin D. Roosevelt